

## Polyclonal Antibody to UBE2V2 (Ubiquitin E2 variant 2)/Mms2



11175 Flintkote Ave., Suite E, San Diego, CA 92121  
Tel: (858) 642-0978 Fax (858) 642-0937  
Toll free: 1-888-723-GENE  
E-mail: info@imgenex.com  
web site: http://www.imgenex.com

## Polyclonal Antibody to UBE2V2 (Ubiquitin E2 variant 2)/Mms2

**Catalog No :** IMG-400  
**Formulation :** 100 ug in 200 ul PBS containing 0.2% gelatin and 0.05% sodium azide. Sodium azide is highly toxic.  
**Isotype :** Rabbit IgG  
**Clone :** N/A  
**Purification :** Protein G Chromatography  
**Species React :** Human  
**Host :** Rabbit

### Application

Western blot analysis: 2 ug/ml

### Storage

This antibody is supplied as protein-G purified protein. Store at 4°C, stable at 4°C for 6 months. For long-term storage, store at -20°C.

**Recommended Positive Control:** HL-60 (Imgenex Cat. No. # 40169)

### Background

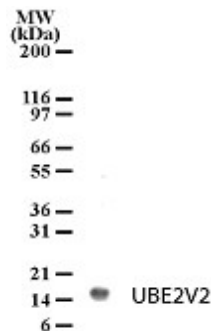
The differentiation and activation of monocytes (MO) and monocytic cells is modulated by 1alpha,25-dihydroxyvitamin D3 (Vitamin D3). Recently, using mRNA Differential Display technology, Fritsche J, et al have identified a gene which is induced in freshly isolated human blood MO that are cultured for 4 hours with Vitamin D3 (1). This cDNA encodes a putative 16.5 kD protein. The product of this gene has structural homology with yeast MMS2p and human CROC-1), which defines a structurally and functionally conserved Ubc-like protein family (2). This protein was called Ubiquitin E2 variant (UBE2V2) or MMS2 (methyl methanesulfonate sensitive 2). The yeast UEV protein, Mms2, is required together with Ubc13 for RAD6/RAD18-dependent postreplicative DNA repair in yeast (3). These proteins also play a central role in the assembly of K63-linked polyubiquitin chains (4,5) UEV/Ubc complexes have been implicated in the assembly of Lys63-linked polyubiquitin chains that act as a novel signal in postreplicative DNA repair and IkbA kinase activation. Recent crystal structure analysis provides direct evidence that the Mms2/Ubc13 heterodimer is necessary for DNA repair (6,7).

### Antigen

This antibody was generated by immunizing rabbit with a mixture of synthetic peptides containing amino acids 12-28 of human UBE2V2.

### Genebank Info (Protein)

NP\_003341



Detection of UBE2V2 in HL-60 cell lysate with anti-UBE2V2 pcAb (Cat. #IMG-400) at 2ug/ml dilution.

### Related Products

- 20301 [Goat Anti-Rabbit HRP Conjugate]
- IMG-5142A [Polyclonal Antibody to beta Actin]
- IMG-5143A [Polyclonal Antibody to GAPDH]
- 40169 [HL60 cell line lysate (promyelocytic cell line)]

### Reference

- Broomfield S., Chow B.L. and Xiao W. Proc. Natl. Acad. Sci. USA, 95:5678-5683 (1998).
- Deng L., Wang C., Spencer E., Yang L., Braun A., You J., Slaughter C., Pickart C. and Chen Z.J. Cell, 103:351-361 (2000).
- Fritsche J, Rehli M, Krause SW, Andreessen R and Kreutz M. Biochem. Biophys. Res. Commun. 235 (2), 407-412 (1997).
- Xiao W, Lin SL, Broomfield S, Chow BL and Wei YF. Nucleic Acids Res. 26 (17), 3908-3914 (1998).
- Ulrich H.D. and Jentsch S. EMBO J., 19:3388- 3397 (2000).
- Moraes,T.F., Edwards,R.A., McKenna,S., Pastushok,L., Xiao,W., Glover,J.N. and Ellison,M.J. NatureStructural Biol. 8 (8), 669-673 (2001).
- VanDemark AP, Hofmann RM, Tsui C, Pickart CM, Wolberger C. Cell 105(6): 711-20 (2001).

## Polyclonal Antibody to UBE2V2 (Ubiquitin E2 variant 2)/Mms2

Copyright © IMGENEX Corporation. All Rights Reserved

Toll free: 1-888-723-4363

Fax: 1-858-642-0937

[www.imgenex.com](http://www.imgenex.com)

[info@imgenex.com](mailto:info@imgenex.com)

Research purposes only. Not for diagnostic or in vivo use.