

## Monoclonal Antibody to TLR2/CD282 (Clone TL2.1) Alexa Fluor® 488 Conjugate



11175 Flintkote Ave., Suite E, San Diego, CA 92121  
Tel: (858) 642-0978 Fax (858) 642-0937  
Toll free: 1-888-723-GENE  
E-mail: [info@imgenex.com](mailto:info@imgenex.com)  
web site: <http://www.imgenex.com>

## Monoclonal Antibody to TLR2/CD282 (Clone TL2.1) Alexa Fluor® 488 Conjugate

**Catalog No :** IMG-416AF488  
**Formulation :** 100 ug in 200 ul PBS containing 0.05% BSA and 0.05% sodium azide. Sodium azide is highly toxic.  
**Isotype :** Mouse IgG2a, Kappa  
**Clone :** TL2.1  
**Purification :** Protein G Chromatography  
**Species React :** Dog, Human  
**Host :** Mouse

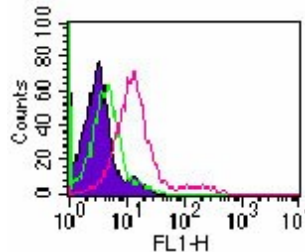
**Application**  
Flow (Cell Surface): 0.5-1 ug/10<sup>6</sup> cells  
Flow (Intracellular): 0.5-1 ug/10<sup>6</sup> cells  
IF/ICC: please see Mempel et. al. (2003) for details  
**Storage**  
Product is light- and temperature-sensitive. Store in the dark at 4°C. Do not freeze.

### Background

The Toll-like receptors (TLRs) in mammals comprise a family of transmembrane proteins characterized by multiple copies of leucine rich repeats in the extracellular domain and an IL-1 receptor motif in the cytoplasmic domain. Like its counterparts in *Drosophila*, TLRs signal through adaptor molecules (1). The TLR family is a phylogenetically conserved mediator of innate immunity that is essential for microbial recognition (2). Ten human homologs of TLRs (TLR1-10) have been described (3). TLR2 is differentially expressed in human cells. TLR2 is expressed in tonsils, lymph nodes, and appendices, activated B-cells in germinal centers. CD14<sup>+</sup> monocytes expressed the highest level of TLR2 followed by CD15<sup>+</sup> granulocytes, and CD19<sup>+</sup> B-cells, CD3<sup>+</sup> T-cells, and CD56<sup>+</sup> NK cells did not express TLR2. The expression of TLR2 in different cell types is regulated by different immune response modifiers. For example, LPS, GM-CSF, IL-1, and IL-10 up regulates TLR2 whereas IL-4, IFN-gamma, and TNF down regulate TLR2 expression in monocytes (4).

### Antigen

This antibody was raised by immunizing mice with CHO cells transfected with human TLR2 cDNA (Flo et al, 2000). The hybridoma supernatants were selected by flow cytometry.



Intracellular flow analysis of TLR2 in human monocytes using IMG-416AF488 at 1 ug/10<sup>6</sup> cells. The shaded histogram represents cells with no anti-TLR2 antibody added; green represents the isotype control (IMGENEX, Cat. no. 20110AF488); red represents IMG-416AF488, anti-TLR2.

### Related Products

1. IMG-5019A-1 [Monoclonal Antibody to GAPDH - Loading Control]
2. IMG-5019A-2 [Monoclonal Antibody to GAPDH - Loading Control]
3. IMG-2201 [Pam3CSK4, TLR1 and TLR2 Ligand]
4. IMG-2206 [MALP-2, TLR6/TLR2 ligand]
5. 20110AF488 [Mouse IgG2a Alexa Fluor® 488 Conjugate Isotype Control]

### Reference

1. Muzio M, Natoli G, Saccani S, Levrero M, and Mantovani A. *J. Exp. Med.* 187: 2097-2101 (1998).
2. Medzhitov R and Janeway CA. *Cell* 91: 295-298 (1997).
3. Chuang TH and Ulevitch RJ. *Biochim. Biophys. Acta* 1518 (1-2): 157-161 (2001).
4. Flo TH, Halaas O, Torp S, Ryan L, Lien E, Dybdahl B, Sundan A, Espevik T. *J Leukoc Biol* 69(3): 474-481 (2001).
5. Chuang TH and Ulevitch RJ. *Eur Cytokine Netw* 11(3): 372-378 (2000).

### Product Citations

1. Human Toll-like receptor 2 mediates monocyte activation by *Listeria monocytogenes*, but not by group B *Streptococci* or lipopolysaccharide. Flo TH, O Halaas, E Lien, L Ryan, G Teti, DT Golenbock, A Sundan, T Espevik. *J Immunology* 164: 2064-2069 (2000).  
Imgenex antibody cited: TLR2 [IMG-416]:
  1. Generation of the IMG-416 TL2.1 antibody clone, recognizing a TLR2-associated epitope (Materials and Methods)
  2. The IMG-416 antibody is TLR2 transfected validated in Fig 3 [Flow (Cell Surface)], and Fig 4 (IP).
  3. Flow (Cell Surface), Fig 3 (human PBMC and TLR2 transfectants)
  4. IP, Fig 4 (TLR2 transfectants)
  5. FA, Fig 5 [inhibition of *Listeria monocytogenes* (HKLM) and LPS-induced IL-6 production in transfectants], and Fig 6 (inhibition of HKLM but not LPS-induced TNF

# Monoclonal Antibody to TLR2/CD282 (Clone TL2.1) Alexa Fluor® 488 Conjugate

## production in human monocytes)

**2. Evidence of Toll-like receptor molecules on human platelets.** Cognasse F, H Hamzeh, P Chavarin, S Acquart, C Genin, O Garraud. *Immunology and Cell Biology* 83: 196-198 (2005). **Imgenex antibodies cited:**

TLR2-PE [IMG-416D]

TLR4-PE [IMG-417D]

TLR6 [IMG-304A]

TLR8-PE [IMG-321D]

TLR9-PE [IMG-305D]

## Applications:

**Flow Cytometry (Cell Surface and Intracellular) (human platelets), Figs. 1, 2.**

**A comparison of staining results, intracellular versus cell surface flow cytometry is shown.**

**3. Intracellular Signaling Mechanisms Regulating Toll-Like Receptor-Mediated Activation of Eosinophils.** Wong CK, PFY Cheung, WK IP and CWK Lam. *Am. J. Respir. Cell Mol. Biol.* doi:10.1165/rcmb.2006-0457OC (2007), in press. **Imgenex antibodies cited (human blood eosinophils and neutrophils from buffy coat): For WB, Fig. 1A: TLR1 (IMG-5012), TLR5 (IMG-664), TLR6 (IMG-304A), TLR7 (IMG-540), TLR8 (IMG-321A), TLR9 (IMG-305A). For Flow (Intracellular) and Flow (Surface), Fig. 1B: TLR1 (IMG-5021), TLR2 (IMG-416C), TLR3 (IMG-315C), TLR4 (IMG-417C), TLR5 (IMG-663C), TLR6 (IMG-304C), TLR7 (IMG-665A), TLR8 (IMG-321C), TLR9 (IMG-305C).**

**4. Toll-Like Receptor Expression in Human Keratinocytes: Nuclear Factor B Controlled Gene Activation by Staphylococcus aureus is Toll-Like Receptor 2 But Not Toll-Like Receptor 4 or Platelet Activating Factor Receptor Dependent.** Martin Mempel, Verena Voelcker, Gabriele Köllisch, Christian Plank, Roland Rad, Markus Gerhard, Christina Schnopp, Peter Fraunberger, Autar K. Walli, Johannes Ring, Dietrich Abeck, and Markus Ollert. *J. Invest. Dermatol.*, 121: 1389-1396 (2003). **Imgenex antibodies cited: 1. TLR2 (IMG-416) 2. TLR4 (IMG-417) [IF/ICC, Fig.2A and 2D (human keratinocytes)].**

**5. High-avidity antitumor T-cell generation by toll receptor 8-primed, myeloid-derived dendritic cells is mediated by IL-12 production.** Xu S., U. Koldovsky, M. Xu, D. Wang, E. Fitzpatrick, G. Son, G. Koski, and B. J. Czerniecki., *Surgery*, 140:170-178 (2006). **Imgenex antibodies cited: 1. TLR2 (IMG-416) 2. TLR3 (IMG-315) 3. TLR4 (IMG-417) 4. TLR8 (IMG-321) [Flow (cell surface and intracellular), Fig.1A and 1B (human monocytes)].**

**6. Highly purified lipoteichoic acid activates neutrophil granulocytes and delays their spontaneous apoptosis via CD14 and TLR2.** Sonja Lotz, Eresso Aga, Inga Wilde, Ger van Zandbergen, Thomas Hartung, Werner Solbach, and Tamás Laskay. *J. Leukoc. Biol.* 75: 467-477 (2004). **Imgenex antibodies cited: 1. TLR2 (IMG-416E) 2. TLR4 (IMG-417) [FA, Fig.7C (PMN)].**

**7. Differential expression of Toll-like receptor 2 in human cells.** Flo TH, O Halaas, S Torp, L Ryan, E Lien, B Dybdahl, A Sundan, T Espevik T. *J Leukoc Biol* 69: 474-481 (2001).

**Imgenex antibodies cited: TLR2 (IMG-416):**

1. Flow (Cell Surface): Figs 1 (whole blood), 5 (granulocytes), and 6 (monocytes)

2. IP: Fig 2 (monocytes)

3. IF/ICC: Fig 3 (monocyte-derived macrophages)

**8. 2 TLR2 and TLR4 expression on the immune cells of tuberculous pleural fluid.** Prabha C, P Rajashree, D Sulochana. *Immunology Letters* 117: 26-34 (2008). **Imgenex antibodies cited:**

1. TLR2- FITC (IMG-416C): Flow (cell surface): Figs. 1A,B (human CD4+T cells, CD8+T cells, B cells, CD16+56+ cells and monocytes); 2(CD4+T cells); 4A,B (human Treg cells). Flow (intracellular): Fig. 3A,B (CD4+T cells)

2. TLR4- FITC (IMG-417C).Flow (cell surface): Figs. 1B,C (human CD4+T cells, CD8+T cells, B cells, CD16+56+ cells and monocytes); 2(CD4+T cells); 4A,B (human Treg cells). Flow (intracellular): Fig. 3A,B (CD4+T cells)

9.

Antibodies specific for human or murine Toll-like receptors detect canine leukocytes by flow cytometry. Burgener IA and TW Jungi. *Veterinary Immunology and Immunopathology* 124:184-191 (2008). **Imgenex products cited for canine (dog) PBMC subpopulations:**

1. 10083K [IC-Flow (Intracellular Staining Flow Assay) Kit

2. IMG-416A (TLR2), Flow (Cell Surface), Fig 1 and Tables 1 & 2

3. IMG-315A (TLR3), Flow (Intracellular), Tables 1 & 2

4. IMG-417A (TLR4), Flow (Intracellular), Fig 1 and Tables 1 & 2

5. IMG-663A (TLR5), Flow (Cell Surface), Fig 1 and Tables 1 & 2

6. IMG-664A (TLR5), Flow (Cell Surface), Tables 1 & 2

7. IMG-305A (TLR9), Flow (Intracellular), Fig 2 and Tables 1 & 2

**10. Toll-like receptor 2 and NALP2 mediate induction of human Beta-Defensins by Fusobacterium nucleatum in gingival epithelial cells.** Ji S, Shin J E, Kim Y S, Oh J E, Min B M, Choi Y. *Infection and Immunity* 77:1044-1052 (2009). **Imgenex antibody cited:**

TLR2 [IMG-416C]

Flow (Cell Surface and Intracellular) (HOK-16B cells cocultured with F. nucleatum), Fig. 1d

Flow (Cell Surface) (TLR2-siRNA-transfected HOK-16B cells infected with F. nucleatum), Fig. 4a

**11. Expression of mRNA and proteins for toll-like receptors, associated molecules, defensins and LL-37 by SRIK-NKL, a CD8+ NK/T cell line.** Srivastava M D, B I S Srivastava.

*Leukemia Res* 29: 813-820 (2005).

**Imgenex antibodies cited [IF/ICC (SRIK-NKL cells)]:**

1. TLR2 [IMG-416]

2. TLR4 [IMG-417]

3. TLR7 [IMG-581]

4. TLR9 [IMG-305]

**12. Innate immune recognition of invasive bacteria accelerates atherosclerosis in apolipoprotein E-deficient mice.** Gibson F C III, C Hong, H-H Chou, H Yumoto, J Chen, E Lien, J

Wong, C A Genco. *Circulation* 109: 2801-2806 (2004).

**Imgenex antibody cited: TLR2 [IMG-416]**

1. IHC:P (aortic tissue), Fig. 2b

2. Flow (Cell Surface) (P gingivalis, mutant P gingivalis), Figs. 3a, 3b

**13. Deviation from major codons in the toll-like receptor genes is associated with low toll-like receptor expression.** Zhong F, W Cao, E Chan, P N Tay, F F Cahya, H Zhang, J Lu.

*Immunology* 114: 83 (2005).

**Imgenex antibodies cited [Flow (Intracellular) (293T cells and monocytes), Fig. 1]**

1. TLR2 [IMG-416]

2. TLR9 [IMG-305]

**14. Expression and function of Toll-like receptor 2 in canine blood phagocytes.** Bazzocchi C, M Mortarino, S Comazzi, C Bandi, A Franceschi, C Genchi. *Veterinary Immunology and Immunopathology* 104: 15-19 (2005).

**Imgenex antibody cited: TLR2 [IMG-416A]**

1. Flow (dog whole blood cells), Fig. 3

**15. A dipalmitoylated lipoprotein from Mycoplasma pneumoniae activates NF- B through TLR1, TLR2, and TLR6.** Shimizu T, Y Kida, K Kuwano. *J Immunol* 175: 4641-4646

(2005).

**Imgenex antibody cited: TLR2 [IMG-416E]**

1. FA (THP-1 cells), Fig. 2

**16. Signal transduction and nuclear responses in Staphylococcus aureus-induced expression of human -defensin 3 in skin keratinocytes.** Menzies B E, A Kenoyer. *Infect Immun* 74: 6847-6854 (2006).

**Imgenex antibody cited: TLR2 [IMG-416E]**

1. FA (human keratinocytes), Fig. 2

**17. The probiotic Escherichia coli strain Nissle 1917 induces T cell apoptosis via caspase-and FasL-dependent pathways.** *International Immunology* 20: 829-840 (2008).

**Imgenex antibodies cited [Flow (Cell Surface) (human PBMCs), Fig. 5]:**

1. TLR2 FITC [IMG-416C]

2. TLR4 FITC [IMG-417C]

## Monoclonal Antibody to TLR2/CD282 (Clone TL2.1) Alexa Fluor® 488 Conjugate

**18. Pro-osteogenic phenotype of human aortic valve interstitial cells is associated with higher levels of Toll-like receptors 2 and 4 and enhanced expression of bone morphogenetic protein 2.** Yang X, D Fullerton, X Su, L Ao, J Cleveland, X Meng. *Journal of the American College of Cardiology* 53: 491-500 (2009).

**Imgenex antibodies cited [WB, Flow (Cell Surface): human aortic valve interstitial cells], Figs. 1a, 1b, 2c, 6a]**

1. TLR2-PE [IMG-416D]
2. TLR4-PE [IMG-417D]

**19. Dysregulation of LPS-induced Toll-like receptor 4-MyD88 complex formation and IL-1 receptor-associated kinase 1 activation in endotoxin-tolerant cells.** Medvedev A E, A Lentschat, L M Wahl, D T Golenbock, S N Vogel. *J Immunol* 169: 5209-5216 (2002).

**Imgenex antibody cited: TLR2 [IMG-416A]**

1. WB (human monocytes), Fig. 3
2. Flow (Cell Surface) (human monocytes), Fig. 4

**20. Bacterial lipopolysaccharide and IFN- induce Toll-like receptor 2 and Toll-like receptor 4 expression in human endothelial cells: Role of NF- B activation.** Faure E, L Thomas, H Xu, A E Medvedev, O Euquils, M Arditi. *J Immunol* 166: 2018-2024 (2001).

**Imgenex antibody cited: TLR2 [IMG-416A]**

1. WB (LPS-treated HMEC), Fig. 2a
2. IHC:P (LPS-stimulated HMEC), Fig. 2b, 2c

Copyright © IMGEX Corporation. All Rights Reserved

Toll free: 1-888-723-4363

Fax: 1-858-642-0937

[www.imgenex.com](http://www.imgenex.com)

[info@imgenex.com](mailto:info@imgenex.com)

Research purposes only. Not for diagnostic or in vivo use.