

## Polyclonal Antibody to Edg5/S1P2



11175 Flintkote Ave., Suite E, San Diego, CA 92121  
Tel: (858) 642-0978 Fax (858) 642-0937  
Toll free: 1-888-723-GENE  
E-mail: [info@imgenex.com](mailto:info@imgenex.com)  
web site: <http://www.imgenex.com>

## Polyclonal Antibody to Edg5/S1P2

**Catalog No :** IMG-6135A  
**Formulation :** 100 ug in 200 ul PBS containing 0.05% BSA and 0.05% sodium azide. Sodium azide is highly toxic.  
**Isotype :** Rabbit IgG  
**Purification :** Protein G Chromatography  
**Species React :** Human, Monkey, Mouse, Rat  
**Host :** Rabbit

**Application**  
Western blot analysis: 1-2 ug/ml  
**Storage**  
Store at 4°C, stable for 6 months. For long term storage, aliquot and store at -20°C.

**Recommended Positive Control:** Heart

### Background

S1P2 is a membrane protein belonging to the EDG family of extracellular G protein coupled receptors. It acts as a receptor for the bioactive lysosphingolipid sphingosine 1-phosphate (S1P) and participates in sphingosine 1-phosphate-induced cell proliferation, survival, and transcriptional activation. It shares 92% amino acid identity with rat H218 and approximately 44% identity with the human S1P receptors Edg1 and Edg3. Though the role of S1P2 in vascular permeability is not clear, reports suggest that it regulates PTEN by a Rho GTPase-dependent pathway to inhibit cell migration. S1P2 also plays an important role in normal vascularization and hypoxia-triggered pathological angiogenesis of the mouse retina. The gene for human S1P2 protein is localized on chromosomal region 19p13.2. The protein is usually expressed in human brain and heart.

### Antigen

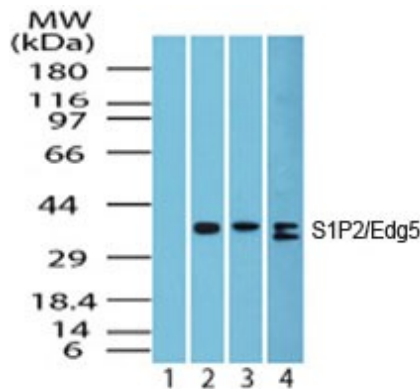
A synthetic peptide corresponding to amino acids 325-343 (LLPLRSSSLERGMHMPTS) of human S1P2/Edg5 was used as immunogen, GenBank no. NP\_004221.3.

### Application Notes

The amino acid sequence used as immunogen is 100% homologous in human, mouse and monkey and 88% homologous in rat.

### Genebank Info (Protein)

NP\_004221



Western blot analysis of S1P2/Edg5 in heart lysate; Lane 1 shows pre-immune sera; Lanes 2, 3 and 4 show IMG-6135A tested on human heart (1 ug/ml), mouse heart (1 ug/ml) and rat heart (2 ug/ml) lysate, respectively.

### Reference

1. MacLennan, AJ. et al. *Mole. Cell. Neurosci.* 5:201-209 (1994).
2. An, S. et al. *J. Biol. Chem.* 275:288-296 (2000).
3. Denise, L. et al. *Cancer Research.* 65:3788-3795 (2005).

Copyright © IMGENEX Corporation. All Rights Reserved

Toll free: 1-888-723-4363

Fax: 1-858-642-0937

[www.imgenex.com](http://www.imgenex.com)

[info@imgenex.com](mailto:info@imgenex.com)

## Polyclonal Antibody to Edg5/S1P2

Research purposes only. Not for diagnostic or in vivo use.