

## Peptide-affinity Purified Polyclonal Antibody to CAM Kinase II (Thr286)



11175 Flintkote Ave., Suite E, San Diego, CA 92121  
Tel: (858) 642-0978 Fax (858) 642-0937  
Toll free: 1-888-723-GENE  
E-mail: [info@imgenex.com](mailto:info@imgenex.com)  
web site: <http://www.imgenex.com>

## Peptide-affinity Purified Polyclonal Antibody to CAM Kinase II (Thr286)

**Catalog No :** IMG-90335-1  
**Formulation :** Rabbit IgG in phosphate buffered saline (without Mg<sup>2+</sup> and Ca<sup>2+</sup>), pH 7.4, 150mM NaCl, 0.02% sodium azide and 50% glycerol.  
**Isotype :** Rabbit IgG  
**Clone :** N/A  
Prepared from rabbit serum by affinity purification  
**Purification :** via sequential chromatography on phospho and dephosphopeptide affinity columns.  
**Species React :** Human, Mouse, Rat  
**Host :** Rabbit

**Application**  
Western Blot: 1:500-1:1000  
**Storage**  
Store at -20°C.

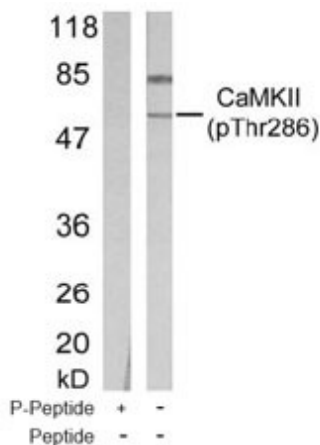
**Recommended Positive Control:** Mouse brain tissue

### Background

Calcium/calmodulin kinase II (CaM Kinase II) is a multi-functional calcium and calmodulin-dependent protein kinase that mediates cellular responses to second messengers. The antibody was raised against a synthetic phosphopeptide corresponding to amino acid residues surrounding the phosphorylated-Thr286 found in rat brain CaM Kinase II. Phosphorylation of Thr286 produces an autonomously active form of CaM Kinase II.

### Antigen

This antibody was generated by immunizing rabbits with a synthetic phosphopeptide corresponding to human CaMKII around the phosphorylation site of threonine 286 (Q-E-TP-V-D).



Western blot analysis of CaMKII (Thr286) using IMG-90335-1 in mouse brain tissue.

### Reference

1. Kennedy, MB. et al. *Science*. 290:750-754 (2000).

Copyright © IMGENEX Corporation. All Rights Reserved

Toll free: 1-888-723-4363

Fax: 1-858-642-0937

[www.imgenex.com](http://www.imgenex.com)

[info@imgenex.com](mailto:info@imgenex.com)

Research purposes only. Not for diagnostic or in vivo use.